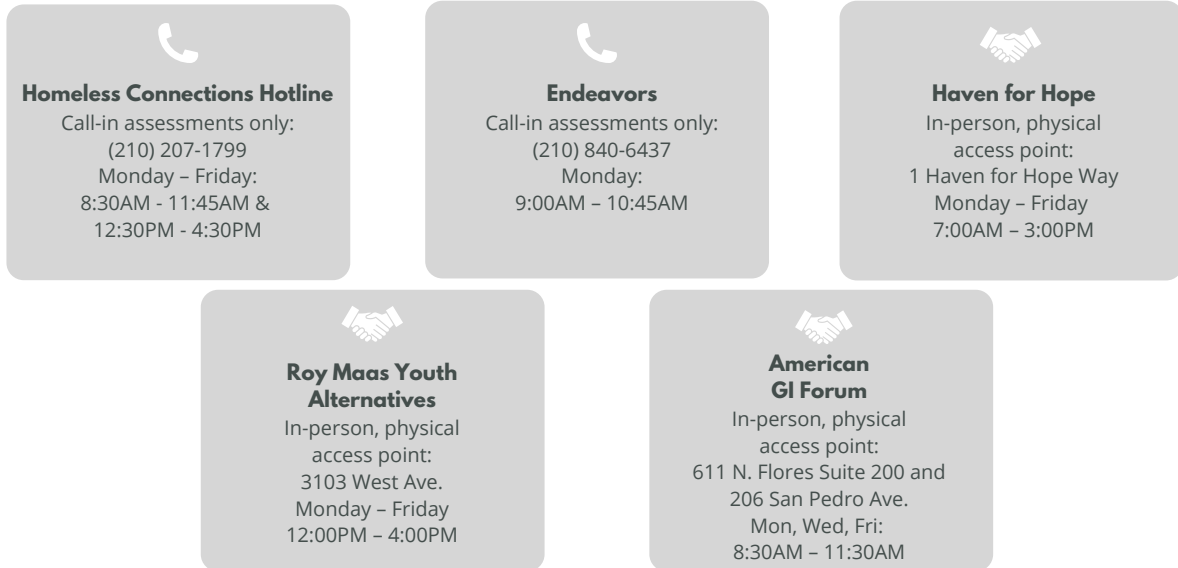


Homelink is San Antonio/Bexar County's local Coordinated Entry System – a uniform, community-wide approach to connect persons who are experiencing or at risk of homelessness to housing resources. Learn more about Homelink below and see the Access Points where you can complete an enrollment to be added to the housing waitlist.

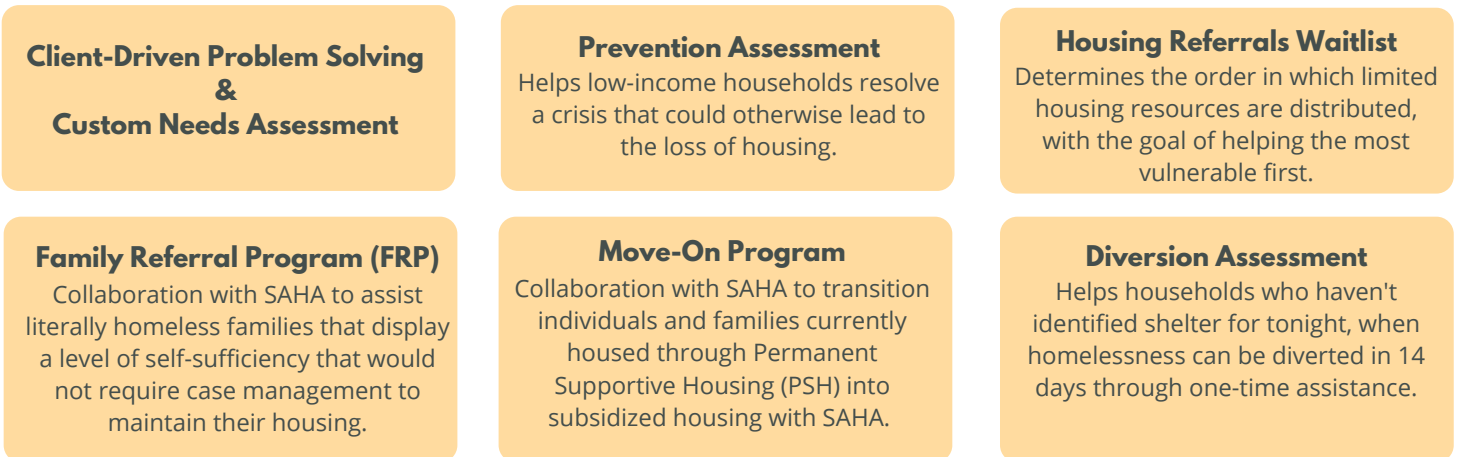
Homelink Process



Homelink Access Points



Homelink Services



★ After completing your Homelink enrollment, if an immediate referral does not meet your need, you must maintain your eligibility by participating in services with an Access Point, Network Partner, or Street Outreach **every 30 days**. You may also call or visit an Access Point or Network Partner to update your activity **every 30 days**. Failure to update eligibility results in unenrollment. If your enrollment closes, you will not be eligible for housing referrals.